



TIVOLI GREEN

CONSULTATION REPORT
NOVEMBER 2025

Tivoli Green Consultation Report

Prepared for Brighton Council
By Playstreet Pty Ltd

Playstreet and Brighton Council would like to give a special thanks to all who contributed and gave their ideas for this exciting project.



DOCUMENT CONTROL

DATE	VERSION	APPROVAL
27-06-2025	Draft	MS
01-07-2025	Draft_2	MS
30-10-2025	Draft_3	MS
12-11-2025	Final	MS
25-11-2025	Final_2	MS

CONTENTS

Consultation Summary	1
Consultation Methods	2

LENNOX PARK

PUBLIC CONSULTATION SESSIONS	4
Community Day	
STAKEHOLDER GROUP CONSULTATION	6
Key stakeholder group sessions	
BRIGHTON COUNCIL ENGAGEMENT	8
Brighton Council Online Survey	
MASTER PLAN DIRECTIONS	11

APPENDIX

Appendix A: Key stakeholder Cohort	
Appendix B: Materials - Letter to stakeholders	
Appendix C: Materials - Mail out	
Appendix D: Materials - Community co design sticker board	
Appendix E: Materials - Online survey form	

CONSULTATION SUMMARY

Brighton Council engaged Playstreet to lead community consultation for the redevelopment of the open space at Tivoli Green Housing Estate. The aim was to listen, gather ideas, and understand the aspirations of local residents, community groups, and park users for each site.

Brighton Council identified key stakeholders and user groups to target during the engagement period and worked closely with Playstreet to develop a tailored strategy and effective communication materials to reach them. This approach led to a diverse range of consultation activities.

The **Tivoli Green** consultation had a good online response but poor attendance on the co design day. This could have been due to the weather conditions which were wintery and blustery!

Common priorities of the groups consulted were the following:

IMPROVED FACILITIES + AMENITIES

Provision of toilets and cafe/ small shops

Looks like:

- Develop plan around proposed commercial strip

RECREATION + PLAY OPPORTUNITIES

To provide a playspace that caters to all ages with open space for kicking a ball and paths for walking/ dog walking.

Looks like:

- Place based playground with a natural feel/ sensory
- Walking paths
- Shelter, bbq's and seating

ENHANCED ENVIRONMENT

To build on the existing open space and retain the natural feel with more gardens and trees.

Looks like:

- Natural style design in landscape sympathetic to local species and fauna
- Build on wetland, marsh ecosystem already there
- Community Garden
- Community connection to waterway
- More trees and gardens

TIVOLI GREEN - SITE PLAN



CONSULTATION METHODS

Methods for consulting with stakeholders are required to be diverse and responsive to the knowledge and abilities of varying groups.

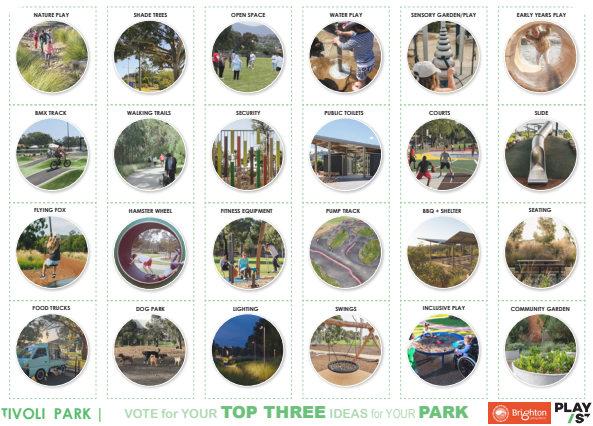
In undertaking stakeholder consultation for Tivoli Green BC/ Playstreet employed various methods to suit both formal and informal sessions.

Below are a series of consultation methods utilised throughout the course of the Tivoli Green community consultation process.

STICKER BOARD

Target engagement: Broad, all ages.

The sticker board served as a valuable reference for stakeholders who find it challenging to visualise three-dimensional spaces or who have limited experience with well-designed public spaces and playgrounds. A curated selection of images showcased a variety of park elements, ranging from passive gathering areas and vegetation to active recreation and play equipment. Participants were each given three stickers to place on their top three preferred ideas for the park.



POST-IT NOTE BOARD

Target engagement: Broad, all ages.

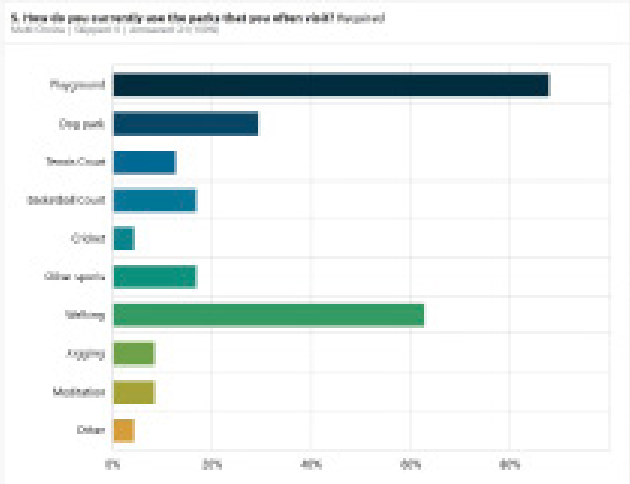
The post-it note board provides an opportunity for stakeholders who are able to articulate their suggestions and preferences in written format. People were encouraged to write ideas on post-it notes and place on the site map provided. This enabled users to spatially locate their ideas.



ONLINE FEEDBACK

Target engagement: Broad, all ages.

Brighton Council hosted an online survey relating to the development of Tivoli Green open space. The survey provided an opportunity for any member of the public to make comment or suggestions relating to the redevelopment.



TIVOLI GREEN

COMMUNITY CO DESIGN TIVOLI GREEN

CONSULTATION METHODS

- Sticker board
- Post-it note board
- Online survey

PARTICIPANTS

- 34 online participants
 - 2 on the day
-

SESSION SUMMARY

Taking place on the 17th May 2025, the community co-design event had a limited turnout. This could have been due to the very cold weather.

Participants were asked to complete two activities on the day. In the first, each person was given three stickers to place on the image board to indicate their top three ideas for the park.

For the second activity participants were asked to add comments to an aerial map to capture any ideas that weren't on the stickerboard. This enabled users to spatially locate their ideas.

TOP IDEAS

(FROM STICKER BOARD)

1. BBQ/ Shelter
2. Dog Park
3. Community Garden
4. Trees and Gardens

OTHER SUGGESTIONS

(FROM POST-IT NOTE BOARD)

- Coffee Shop



Brighton Council

Brighton
going places

- | | |
|-----------------|--------------------|
|
NATURE DECK |
TREE & GARDENS |
|
BIKE TRACK |
WALKING TRAIL |
|
FLYING FOX |
CLIMBING |
|
FOOD TRUCKS |
DOG PARK |

TIVOLI PARK | VOTE for YOUR

STAKEHOLDER GROUP CONSULTATIONS

BENTON VAN DORSSELAER -PM

CONSULTATION METHODS

- In-person

PARTICIPANTS

- Benton van Dorsselaer

The Playstreet team met with Benton at Playstreet Offices to discuss the project. The following suggestions were made:

SUGGESTIONS

- Really invested in site so would love to see a great outcome.
- Would like any design to not ignore work that has been done and build on it, including in the Realm report.
- Has already designed a playspace for a grant and will send through to show us what his ideas were.
- Happy for a playground to be developed that is well thought through and isn't plastic fantastic!
- Walking paths, shelters and bbq's for community and lots of nature is a direction he'd be happy to see taken.
- The final draft plan was discussed with Ben, who provided several valuable suggestions to ensure the master plan implementation aligns effectively with Tivoli Green's staging developments.

MARK NOLAN - LANDOWNER

CONSULTATION METHODS

- In person

PARTICIPANTS

- Mark Nolan

The Playstreet team met with Mark at Tivoli Green to discuss the project. The following suggestions were made:

SUGGESTIONS

- Would like to see walking tracks.
- Has family living there and so will have grandkids who will use the playground so suggested it be good for young ones.
- Just wants to see it beautiful and good for community.

BRIGHTON COUNCIL ENGAGEMENT

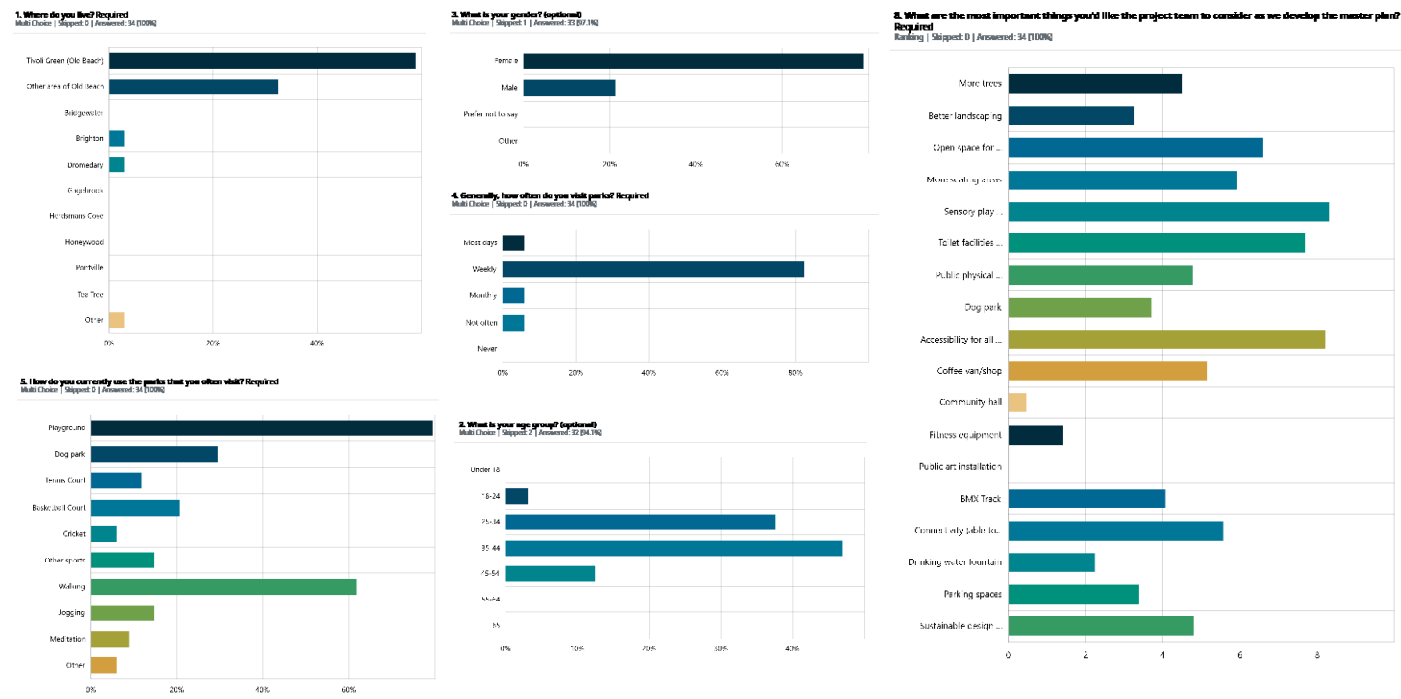
BRIGHTON COUNCIL ONLINE SURVEY

CONSULTATION METHODS

- Online survey form

PARTICIPANTS

- 34 total participants



Brighton Council hosted an online survey to source feedback from the broader community. Links and posters featuring a QR code to complete the survey were posted in several forums: Council's Facebook Page and Brighton Community News.

70% of respondents were from Tivoli Green with the majority of respondents in the 35-44 age group with the majority identifying as female and using the space on a weekly basis.

Elements considered the most important in the design were:

- Sensory Play
- Toilet facilities
- Accessible design

The survey questions and ideas are summarised as:

TOP IDEAS

- Toilets
- Security
- Playground all ages

OTHER SUGGESTIONS

- Dog park
- Shade Trees
- BBQ
- Walking Paths



MASTER PLAN DIRECTIONS

The draft master plan was released for public comment via an online platform.

The feedback was generally very positive, with strong support for the overall vision. Most comments from both stakeholders and the community were detail that will be addressed during the next stage of design development. There was only one change made to the draft master plan in response to stakeholder/ community input:

- The inclusion of fitness nodes to the north of the playground along the shared path.
- The location of temporary car parking and park entry has been changed to align with the incoming staging development of the wetland, Tivoli Green subdivision, and potential commercial precinct.

APPENDIX

APPENDIX A:

KEY STAKEHOLDER COHORTS

In addition to public consultation, which included the Community Co-Design event and online survey, Brighton Council identified the following people as key stakeholders. These groups were subsequently invited to participate in specific engagement activities.

TIVOLI GREEN

- Benton van Dorsselaer - Project Manager for Tivoli Green
- Mark Nolan - Landowner

APPENDIX B: MATERIALS - LETTER TO STAKEHOLDERS

Examples below of engagement materials distributed as part of the consultation process:



Officer: Dang Van
Direct ☎ (03) 6268 7022

Date: 23 April 2025

Benton van Dorsselaer
Project Manager
Tivoli Green PTY LTD

Dear Ben,

I hope this message finds you well.

I'm pleased to introduce Playstreet, the consultant appointed by Brighton Council to lead the development of the **Lennox Park and Tivoli Green Park Master Plans**. As part of the project, Playstreet will be engaging with key stakeholders to help shape the future of these important community spaces.

You or your organisation have been identified as a relevant stakeholder, and we would greatly value your input in helping to shape the direction of these master plans.

Carl Turk or Miriam Shevland from Playstreet will be in touch to introduce themselves and arrange a time to discuss your perspectives, priorities, or any matters you'd like to raise relating to the parks.

Thank you in advance for your time and contribution to this important project. If you have any questions in the meantime, please don't hesitate to contact our Planning Officer Dang Van who is overseeing this project on (03) 6268 7022.

Yours faithfully,

A handwritten signature in black ink, appearing to read 'Alex Woodward'.

Alex Woodward
DIRECTOR DEVELOPMENT SERVICES

APPENDIX C: MATERIALS - MAIL OUT

Examples below of engagement materials distributed as part of the consultation process:



TIVOLI GREEN PARK

Playstreet have recently been engaged by Brighton Council as the principal consultant to prepare a concept master plan for Tivoli Green Park. The project in particular is to develop a playground concept for the parkland at the location shown above.

As part of our design process we undertake community consultation with local community and stakeholders to ensure our designs respect and reflect the aspirations of the local community.

Meet with Playstreet playground designers to share your ideas at site Saturday May the 17th between 2-4pm!

Community Engagement partnership



WE WELCOME YOUR RESPONSES + SUGGESTIONS BELOW

Where do you live? Old Beach ☐ Elsewhere ☐

Age? Under 12 12-17 18-24 25-34 35-44 45-54 55-64 65+

• How often do you visit the reserve? Most days ☐ Weekly ☐ Monthly ☐ Not often ☐

• What would you like to see included in the design for the park?

• Any other comments & suggestions?

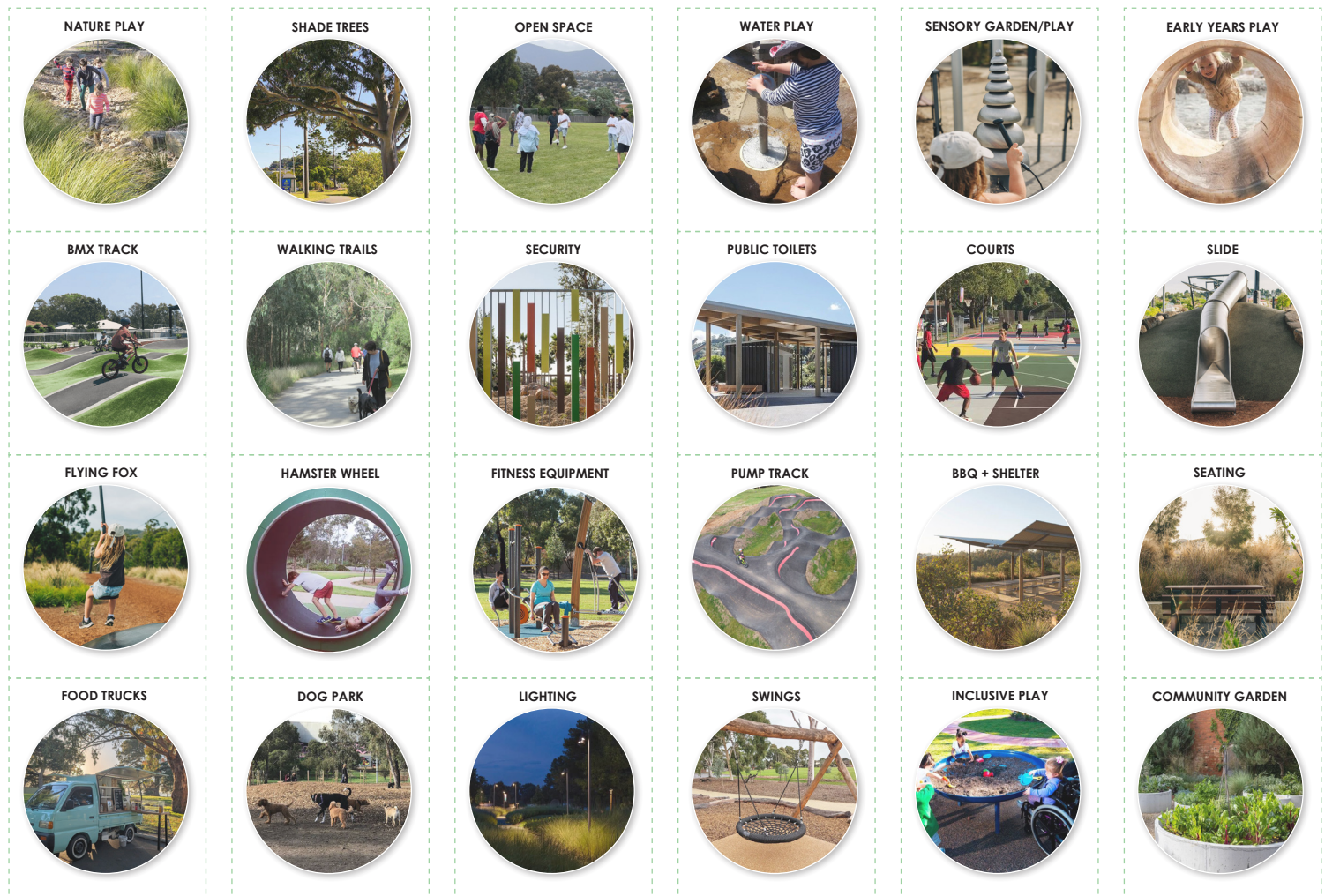
PLEASE RETURN SUGGESTIONS TO COUNCIL CHAMBERS: 1 Tivoli Road, Old Beach, TAS 7017 or development@brighton.tas.gov.au

FEEDBACK ALSO WELCOMED VIA COUNCILS PROJECTS PAGE haveyoursay.brighton.tas.gov.au/tivoli-green-park-master-plan



APPENDIX D: MATERIALS - COMMUNITY CODESIGN_ STICKER BOARD

Examples below of engagement materials distributed as part of the consultation process:



TIVOLI PARK | VOTE for YOUR TOP THREE IDEAS for YOUR PARK



APPENDIX E: MATERIALS - ONLINE SURVEY FORM

TIVOLI GREEN

Tivoli Green Park Master Plan

Community Survey Questions

Q1. Where do you live?

- ☐ Tivoli Green (Old Beach)
- ☐ Other area of Old Beach
- ☐ Bridgewater
- ☐ Brighton
- ☐ Dromedary
- ☐ Gagebrook
- ☐ Herdsmans Cove
- ☐ Honeywood
- ☐ Pontville
- ☐ Tea Tree
- ☐ Other Municipality/Council area in Tasmania (Please specify)

Q2. What is your age group? (optional)

- ☐ Under 18
- ☐ 18-24
- ☐ 25-34
- ☐ 35-44
- ☐ 45-54
- ☐ 55-64
- ☐ 65+

Q3. What is your gender? (optional)

- ☐ Female
- ☐ Male
- ☐ Prefer not to say
- ☐ Other

Q4. Generally, how often do you visit parks?

- ☐ Most days
- ☐ Weekly
- ☐ Monthly
- ☐ Not often
- ☐ Never

Q5. How do you currently use the parks that you often visit? (multiple choices)

APPENDIX E: MATERIALS - ONLINE SURVEY FORM

TIVOLI GREEN

- ☐ Playground
- ☐ Dog park
- ☐ Tennis Court
- ☐ Basketball Court
- ☐ Cricket
- ☐ Other sports
- ☐ Walking
- ☐ Jogging
- ☐ Meditation
- ☐ Other

Q6. Can you name the park that you often visit? What do you love the most about that park?

[...]

Q7. How do you travel to that park?

- ☐ I drive
- ☐ I walk
- ☐ I cycle or scoot
- ☐ I take the bus
- ☐ Other

Q8. What are the most important things you'd like the project team to consider as we develop the master plan? (choose the top 5)

- ✓ More trees
- ✓ Better landscaping
- ✓ Open space for community activities (e.g. market, community garden, yoga)
- ✓ More seating areas
- ✓ Sensory play equipment for young kids
- ✓ Toilet facilities (e.g. baby changing room)
- ✓ Public physical exercise equipment for all ages
- ✓ Dog park
- ✓ Accessibility for all ages and all abilities
- ✓ Coffee van/shop
- ✓ Community hall
- ✓ Fitness equipment
- ✓ Public art installation
- ✓ BMX Track
- ✓ Connectivity (able to be accessed via walking tracks)
- ✓ Drinking water fountain
- ✓ Parking spaces
- ✓ Sustainable design for natural values

Q9. Any other comments and suggestions?