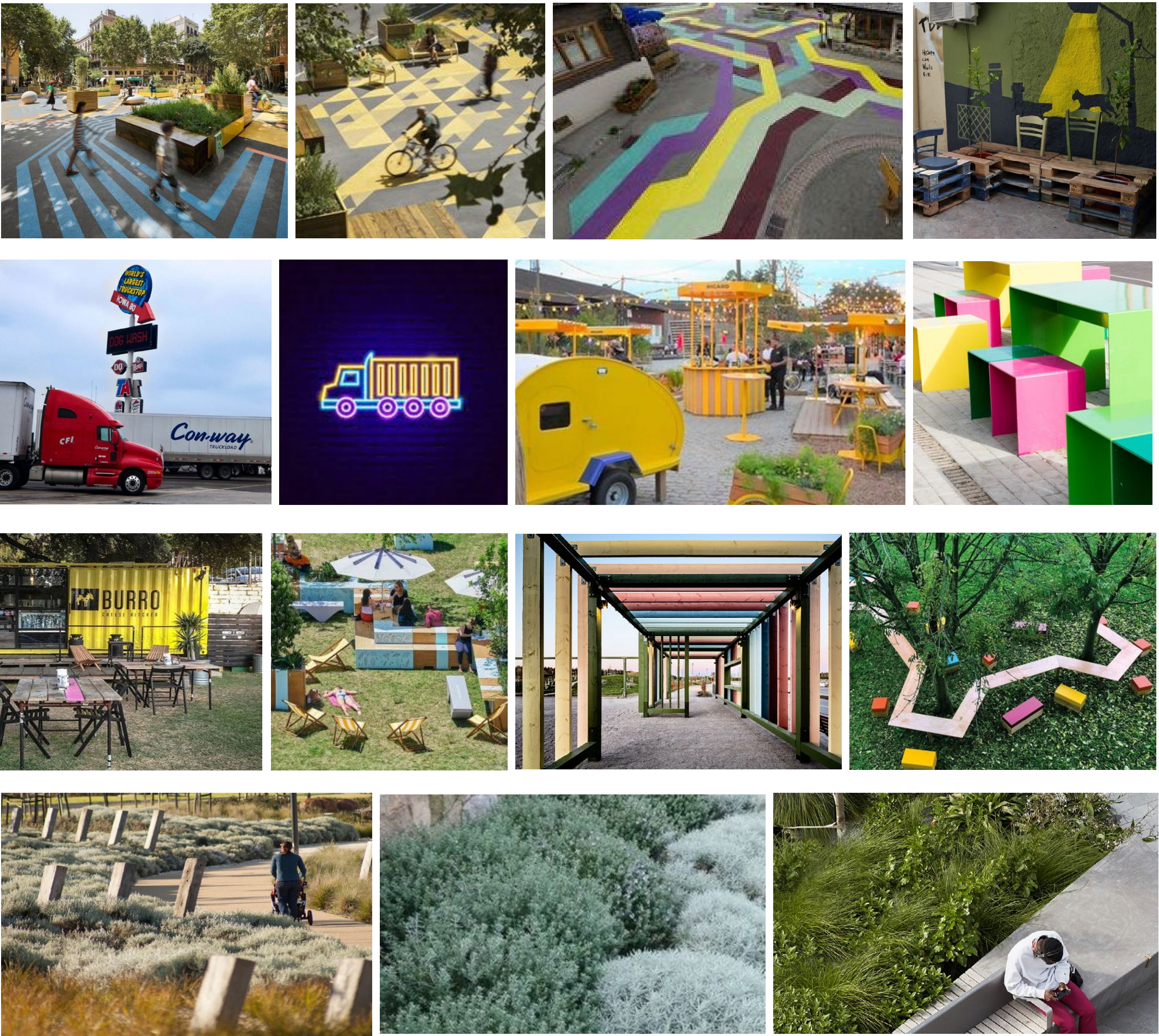


Design Intent & Precedent Images

1. Colourful & playful design elements to form site identity, to include shelter from prevailing winds.
2. Utilise ground & vertical surfaces for art
3. Feature signage throughout, including key entry sign



Planting Strategy & Indicative Images

1. Native planting to enhance site character
2. Use mounding/landforming to create sheltered environment to protect against prevailing westerly winds
3. Underprune trees to maintain site lines



Legend

- Existing:
- Overhead Power Lines
  - Sewer Main
  - Gas Main
  - Post & Lock Box - Gas (To be relocated)
- Underground Power Lines
- Underground Power Lines
  - Water Main
  - Underground TasNetworks Fibre Optics
  - I/O Gas (To be relocated)
- Proposed:
- 1 Heavy vehicle parking
  - 2 Light vehicle parking
  - 3 Food truck parking
  - 4 Concrete footpath, 1.2m wide
  - 5 Large Lawn
  - 6 Platform seating node With wind rated umbrellas
  - 7 Toilet block 2 x DDA toilets M | F
  - 8 Shelter with seating & bins Designed to provide shelter from westerly winds while framing views to Mt Dromedary
  - 9 Art 01- Ground surface mural
  - 10 Art 02- Wall mural
  - 11 Buffer planting Native planting to boundary to enhance character & create sheltered environment. CPTED principles applied to maintain view lines
  - 12 Entry Sign
- NOTE: Construction methodology for any structures located within an easement to be coordinated with relevant authority



| POSSIBLE FACILITIES & AMENITIES                                       | RESPONSE  | COMMENTS   |
|---|---|--|
| Toilets   | <div><div></div><div></div><div></div><div></div><div></div><div></div><div></div><div></div><div></div><div></div></div> | Almost the first thing mentioned by all stakeholders. Adjacent business frustrated by how often they are asked if their facilities can be used. One business has put up signs to indicate that they do not have public bathrooms. Several stakeholders commented that it is essential to locate toilets next to truck parking due to the difficulty of parking large trucks in popular public areas. Comments that better facilities encourage women into the trucking industry. |
| Shelter   | <div><div></div><div></div><div></div><div></div><div></div><div></div><div></div><div></div><div></div><div></div></div> | Westerly winds major issue on site, 'It's warm some of the year and cold for some but it's always windy!' Also comments about the fog in winter. Solar charging points suggested.  |
| Rubbish bins  | <div><div></div><div></div><div></div><div></div><div></div><div></div></div>   | Several people commented that there weren't any bins on site currently, though it was noted that there had been a brief period where bins appeared for about two weeks before being removed.   |
| Bbq   | <div><div></div><div></div><div></div><div></div><div></div></div>  | Mixed feedback. Some commented this would be excellent for team social activities and others said they have bbq at their own locations.  |
| Seating & Furniture   | <div><div></div><div></div><div></div><div></div><div></div></div>  | 'Essential'. Seating needs to be properly protected from the elements. Current bench seat/shade not adequate. Ability to sit communally desired.   |
| Exercise equipment  | <div><div></div></div>  | Very little support for this.  |
| Soft Landscaping  | <div><div></div><div></div><div></div><div></div><div></div><div></div><div></div><div></div></div>                       | Make more attractive' & 'low maintenance so it's easily cared for' was the general comment. Some suggestion that plants may be stolen. Maintain site lines within any tree planting so as to create a security issue at night. Some frustration at the vegetation removed as part of the new development on Greenbanks Rd.   |
| Would you visit the site to purchase food & drink?                    | <div><div></div><div></div><div></div><div></div><div></div><div></div><div></div></div>                                  | General frustration at the lack of food & coffee options. The shop on Crooked Bilet drive is only local vendor. Several commented they drive into Brighton town centre daily for coffe and said a coffee van would do very well. A food truck initiative would be welcomed but people would like to know that its regularly occurring ,e.g. every Friday. One stakeholder responded that they wouldn't want the corner stop to lose business to food vans.                       |
| Once revitalised would you/staff visit the site with some regularity? | <div><div></div><div></div><div></div><div></div><div></div></div>  | The response on this was mixed, some saw it as place to hold meetings and team activities but others see it purely as spot for truckies and think they have all the amenities they need on their own premises.   |
| OTHER CONSIDERATIONS & SUGGESTIONS                                    |   | COMMENTS   |
| Security  | <div><div></div><div></div><div></div></div>  | Comment from one stakeholder that the area is a 'ghosttown' in terms of people after 6pm, however lots of traffic in terms of heavy vehicle refuelling. These business have large flood lights and many feel that facilities should be well lit if open at night.  |
| First aid & Prayer room   | <div><div></div></div>  | SRT Logistics commented they provide a first aid room that doubles as a prayer room at the request of staff and it has been used heavily since introduced.   |
| Parking   | <div><div></div><div></div></div>   | Comments that if food vans got really popular could parking may fill up quickly due to size of trucks that park there. Others disagreed.   |

Note:  
Above table based on 10 responders consulted at their premises on 24.04.23

Site priorities based on feedback:

1.  
PROVIDE PUBLIC  
TOILETS & RUBBISH  
BINS

— Make provision for the delivery of accessible toilet facilities as part of the site master planning process

— Provide adequate rubbish collection

2.  
ESTABLISH SHELTER ON  
SITE

— Locate shelter to protect from prevailing westerly winds & sun

— Adequate size for picnic style seating within

— Opportunity to frame views to Mt Dromedary

— Consider incorporating lighting & solar charging (dark sky friendly)

3.  
IMPROVE SITE  
LANDSCAPING

— Site barren apart from grass

— Enhance site character through a diverse native planting palette

— Species to be robust & low maintenance

— Frame views away from overhead power lines with strategic planting design

4.  
ENCOURAGE FOOD &  
BEVERAGE VENDORS

— Create clear parking zones for food vendors

— Ensure adequate shelter, seating, rubbish bins to aid the success of this initiative

5.  
PROVIDE RANGE  
OF FURNITURE  
CONFIGURATIONS

— Furniture to provide for a range of seating & dining configurations,

— Communal dining for group events, food truck days etc.

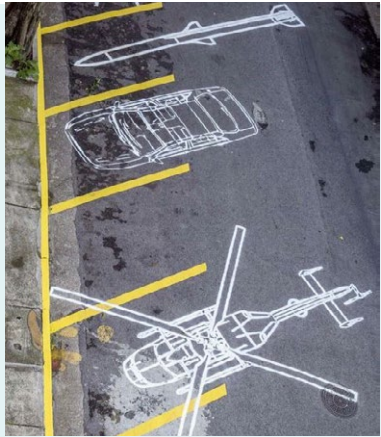
— Private seating nooks for truck drivers in need of respite.



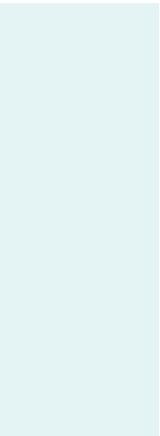
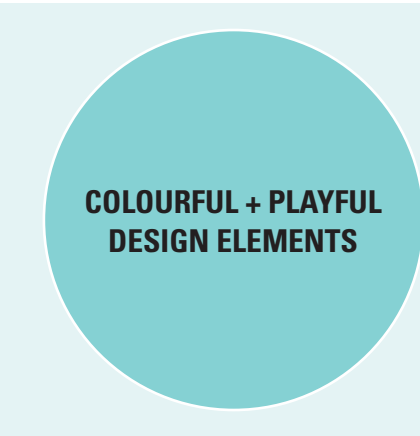
FEATURE SIGNAGE



UTILISE GROUND  
PLANE + WALLS FOR  
ART



COLOURFUL + PLAYFUL  
DESIGN ELEMENTS



FURNITURE  
& STRUCTURES  
CONFIGURED TO  
CREATE HUMAN SCALE  
SPACE

