



population is on the rise increasing by 3% every year compared to .78% across Tasmania

19,263 people live in Brighton



34

average age compared with 42 for Tasmania

7.6% OF US NEED DAILY SUPPORT

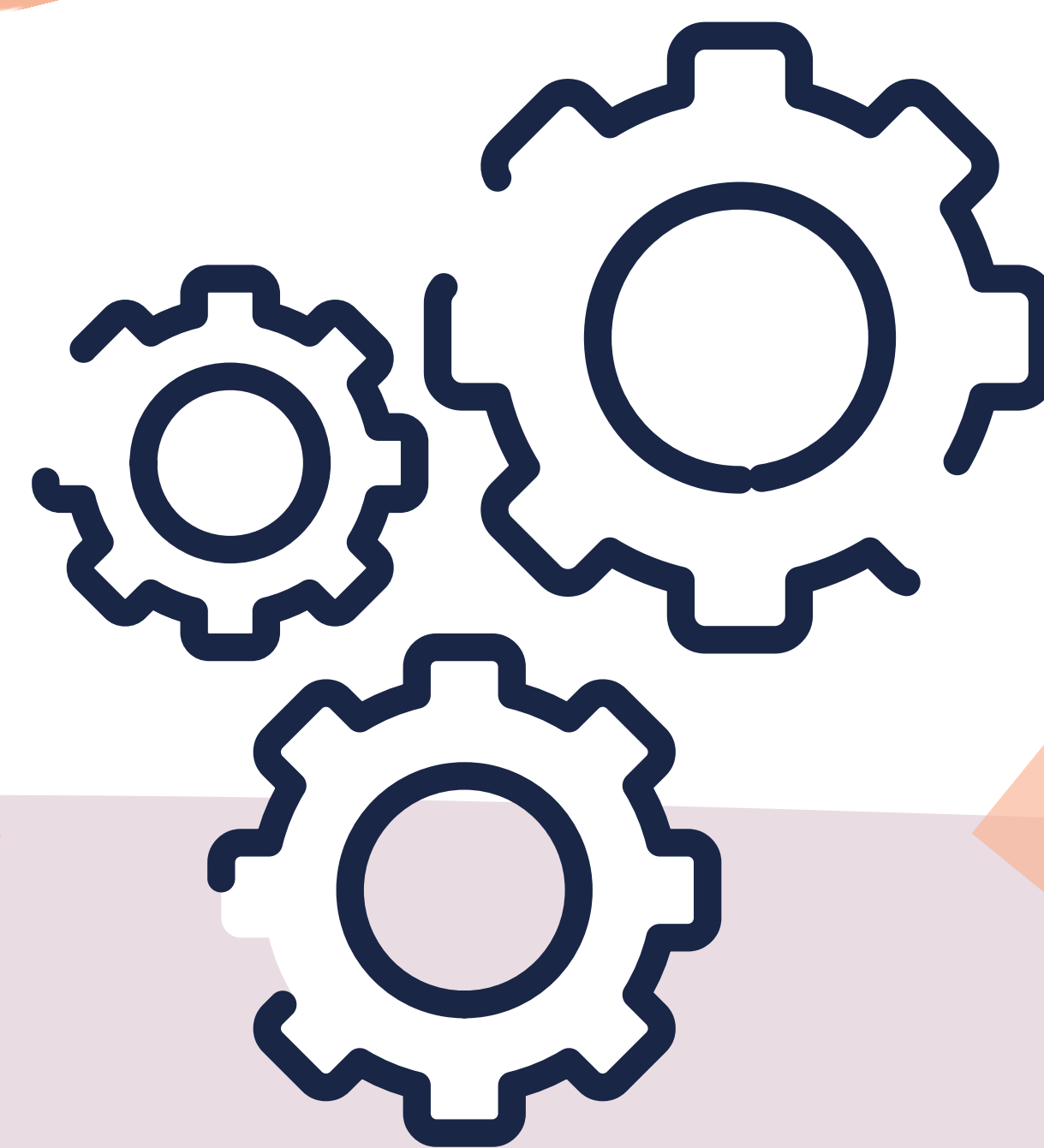
MENTAL HEALTH, ARTHRITIS AND ASTHMA ARE OUR THREE BIGGEST HEALTH ISSUES



37% OF US REPORTED 1 OR MORE HEALTH ISSUES

13% OF US PROVIDED UNPAID CARE

# who is our community?



95.7% of our dwellings are occupied

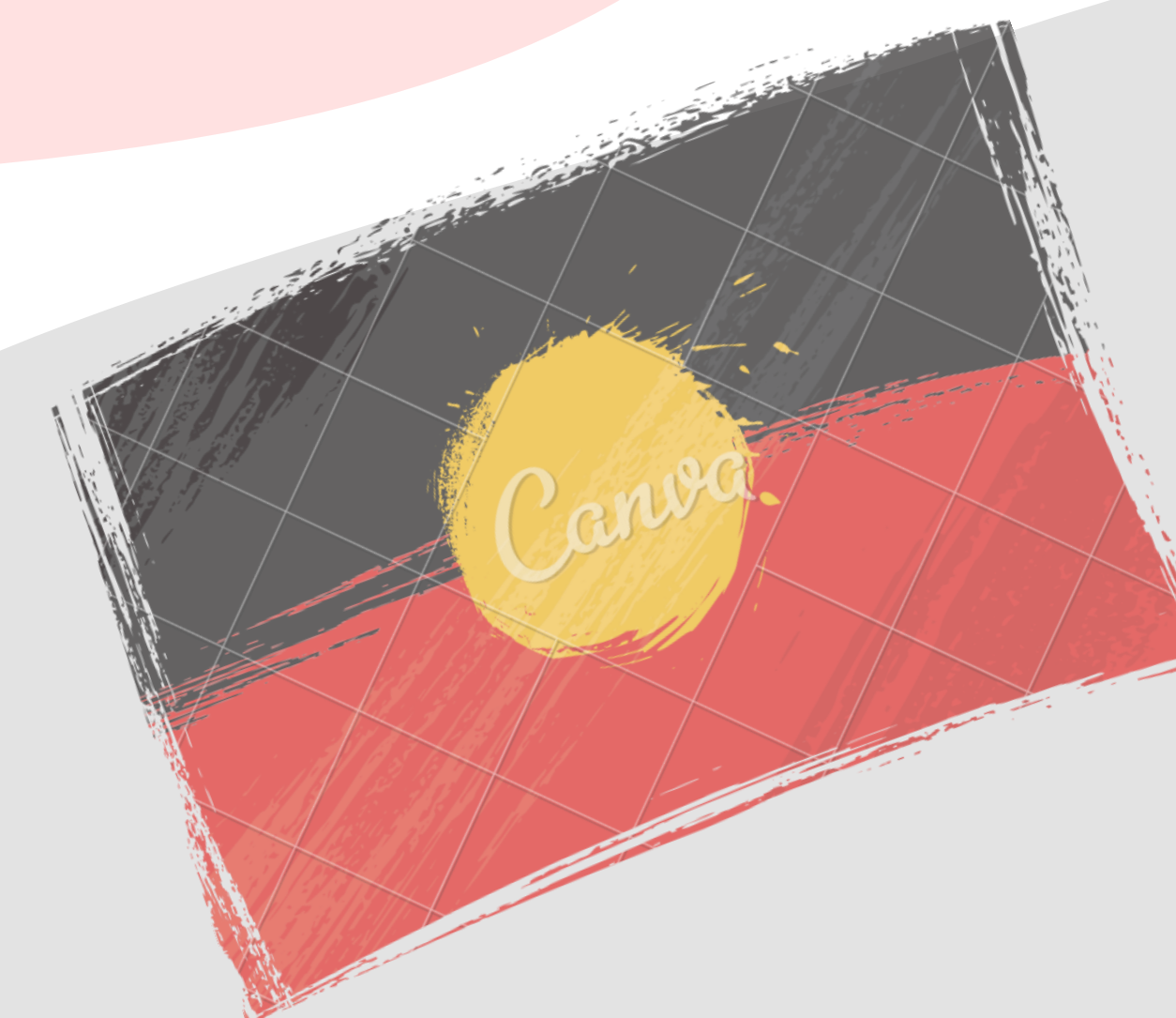
63% of our dwellings are mortgaged or owned outright

17.1% are private rentals  
14.1% are social housing

✓ Labour force has increased by 22.9%

✓ Unemployment rate is very similar to greater Hobart

✓ Health and social care, retail and construction are our biggest employment industries



6.3% of us were born overseas compared with 15.4% of greater Hobart

11.6% of us identify as Aboriginal compared with 5.4% for Tasmania



**Brighton Council**