



Application for Planning Approval

Land Use Planning and Approvals Act 1993

APPLICATION NO.

DA2023/113

LOCATION OF AFFECTED AREA

167 CHURCH ROAD, DROMEDARY

DESCRIPTION OF DEVELOPMENT PROPOSAL

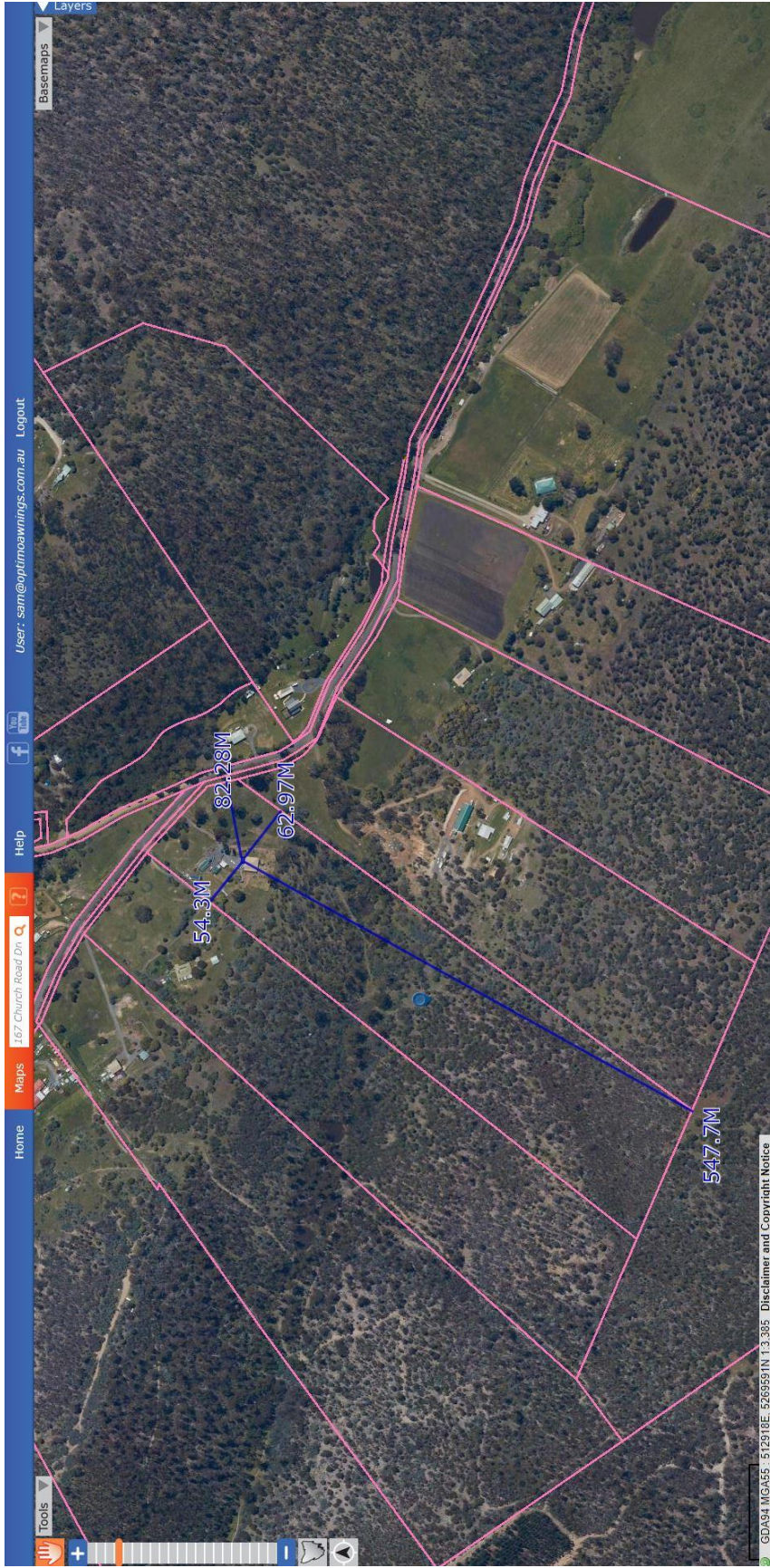
AWNING

A COPY OF THE DEVELOPMENT APPLICATION MAY BE VIEWED AT www.brighton.tas.gov.au AND AT THE COUNCIL OFFICES, 1 TIVOLI ROAD, OLD BEACH, BETWEEN 8:15 A.M. AND 4:45 P.M., MONDAY TO FRIDAY OR VIA THE QR CODE BELOW. ANY PERSON MAY MAKE WRITTEN REPRESENTATIONS CONCERNING AN APPLICATION UNTIL 4:45 P.M. ON **14/07/2023**. ADDRESSED TO THE GENERAL MANAGER AT 1 TIVOLI ROAD, OLD BEACH, 7017 OR BY EMAIL AT development@brighton.tas.gov.au. REPRESENTATIONS SHOULD INCLUDE A DAYTIME TELEPHONE NUMBER TO ALLOW COUNCIL OFFICERS TO DISCUSS, IF NECESSARY, ANY MATTERS RAISED.

DAVID ALLINGHAM
ACTING General Manager



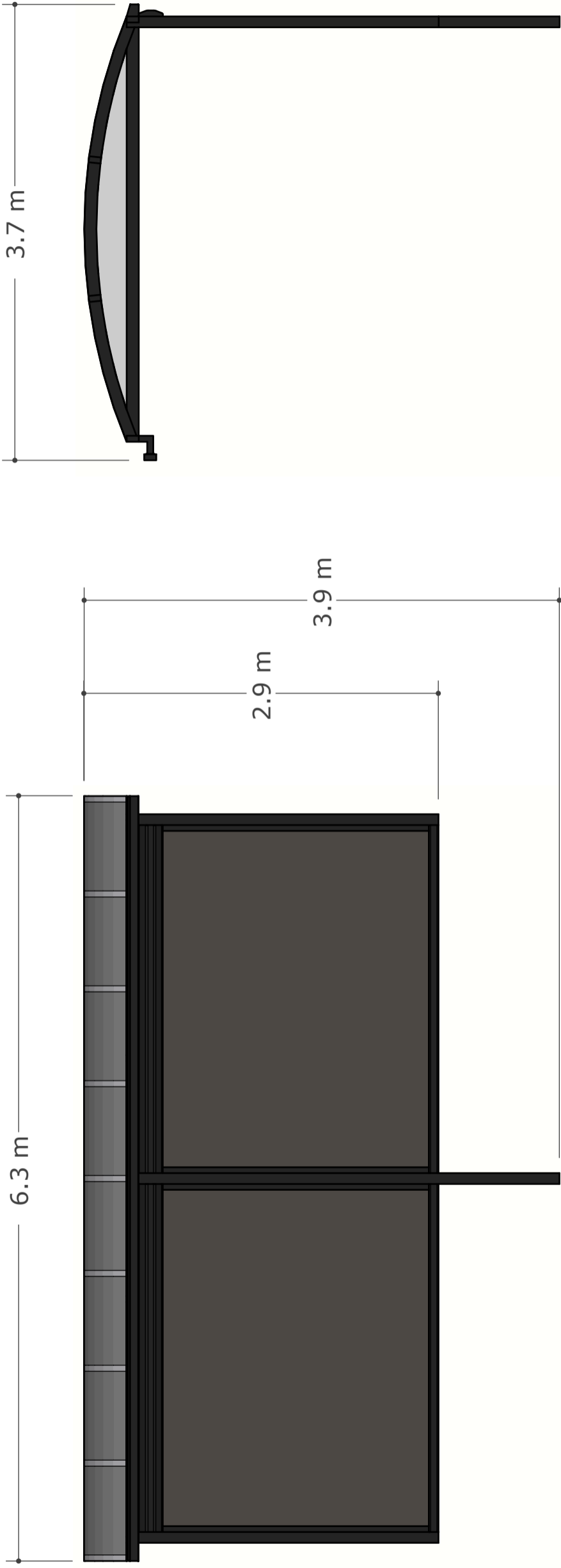
Brighton
going places





JOSHUA WING

Please note the colours, sizes, layouts and pictured products are for visual purposes only and are not for construction or to be treated as a plan of any sort. Colours, sizes, layouts and pictured products may change in the final product/installation process. Multiple products may be pictured but not all included in one quote so please refer to your individual quotes for all inclusions/exclusions.



COLOUR(S)
 FRAME - BLACK
 TRIM/GUTTER - BLACK
 POSTS - BLACK
 ROOF - GREY 70%



Please note the colours, sizes, layouts and pictured products are for visual purposes only and are not for construction or to be treated as a plan of any sort. Colours, sizes, layouts and pictured products may change in the final product/installation process. Multiple products may be pictured but not all included in one quote so please refer to your individual quotes for all inclusions/exclusions.