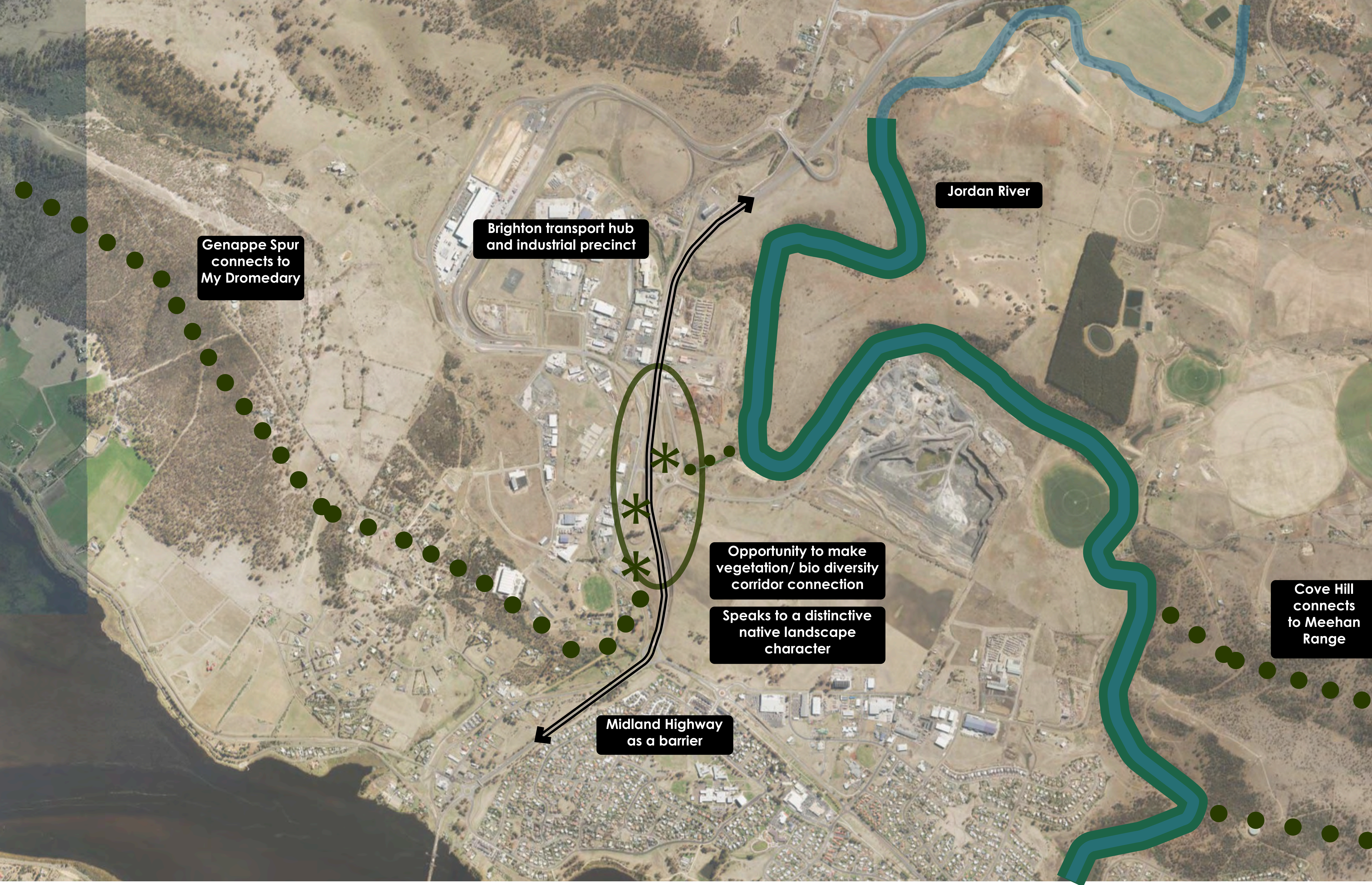


TRANSPORT HUB LANDSCAPE GATEWAY - **LANDSCAPE FRAMEWORK - DRAFT**





Genappe Spur connects to My Dromedary

Brighton transport hub and industrial precinct

Jordan River

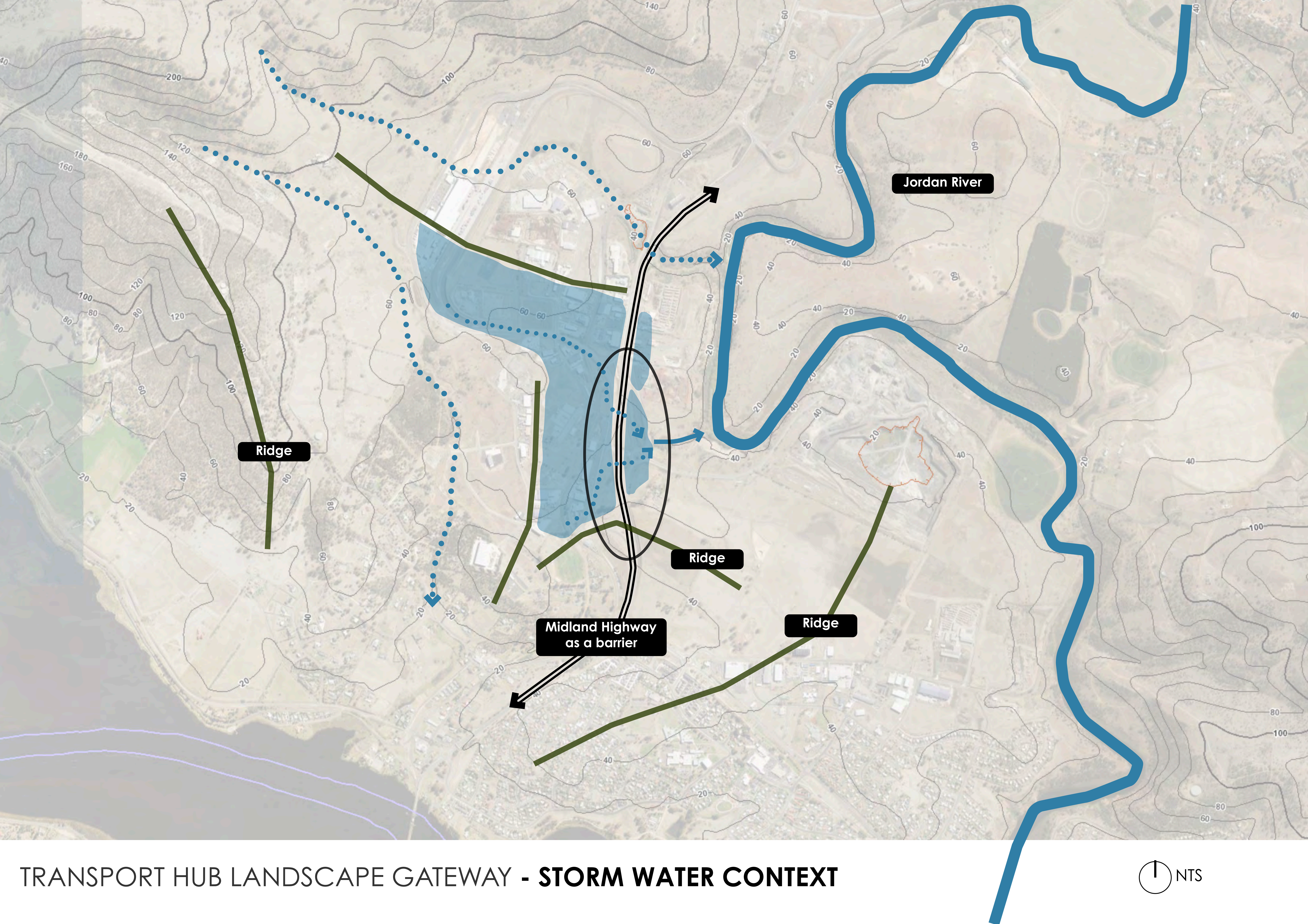
Opportunity to make vegetation/ bio diversity corridor connection

Speaks to a distinctive native landscape character

Midland Highway as a barrier

Cove Hill connects to Meehan Range

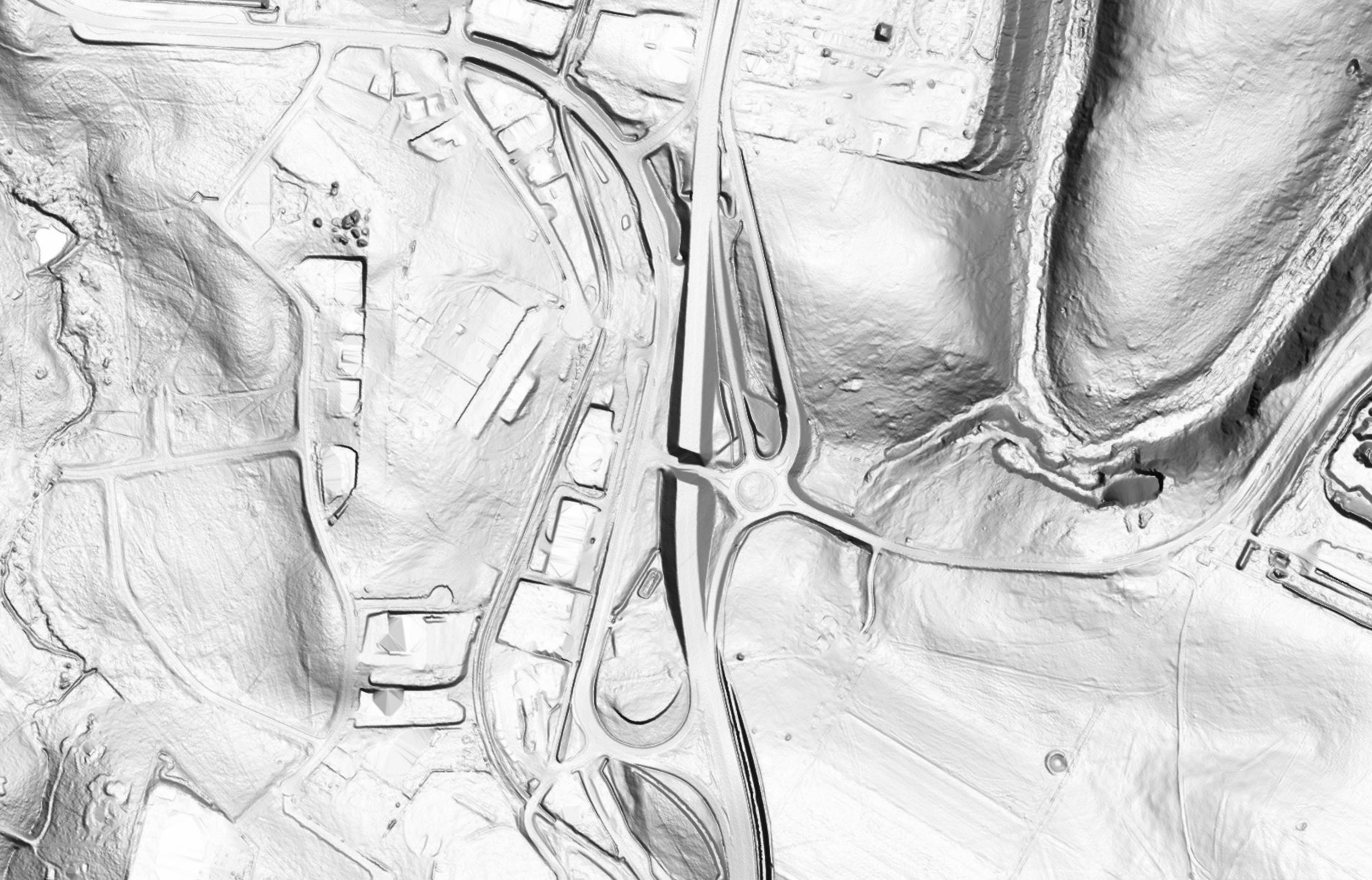




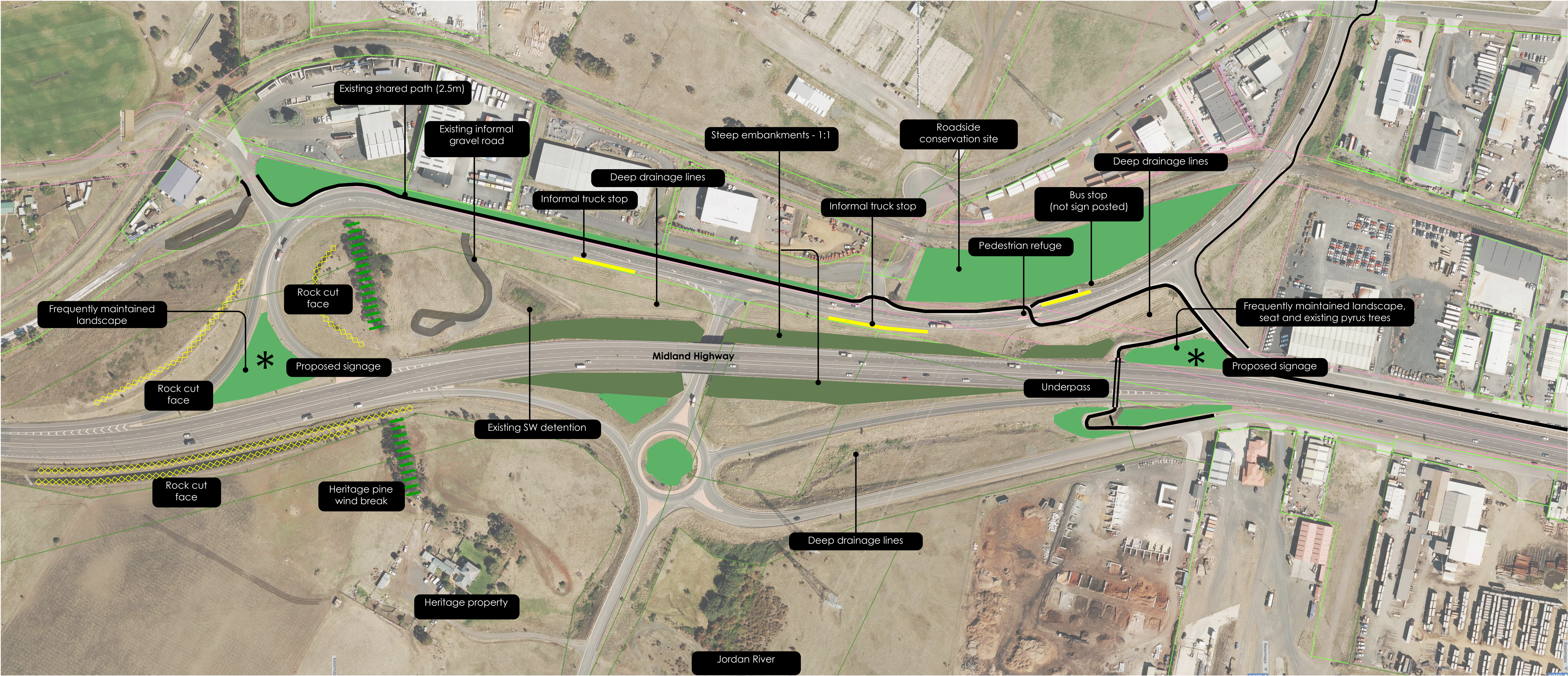
TRANSPORT HUB LANDSCAPE GATEWAY - **STORM WATER CONTEXT**















TRANSPORT HUB LANDSCAPE GATEWAY - **HIGHWAY EXPERIENCE / OPPORTUNITIES**



Frequently maintained landscape



Deep drainage lines



Deep drainage lines



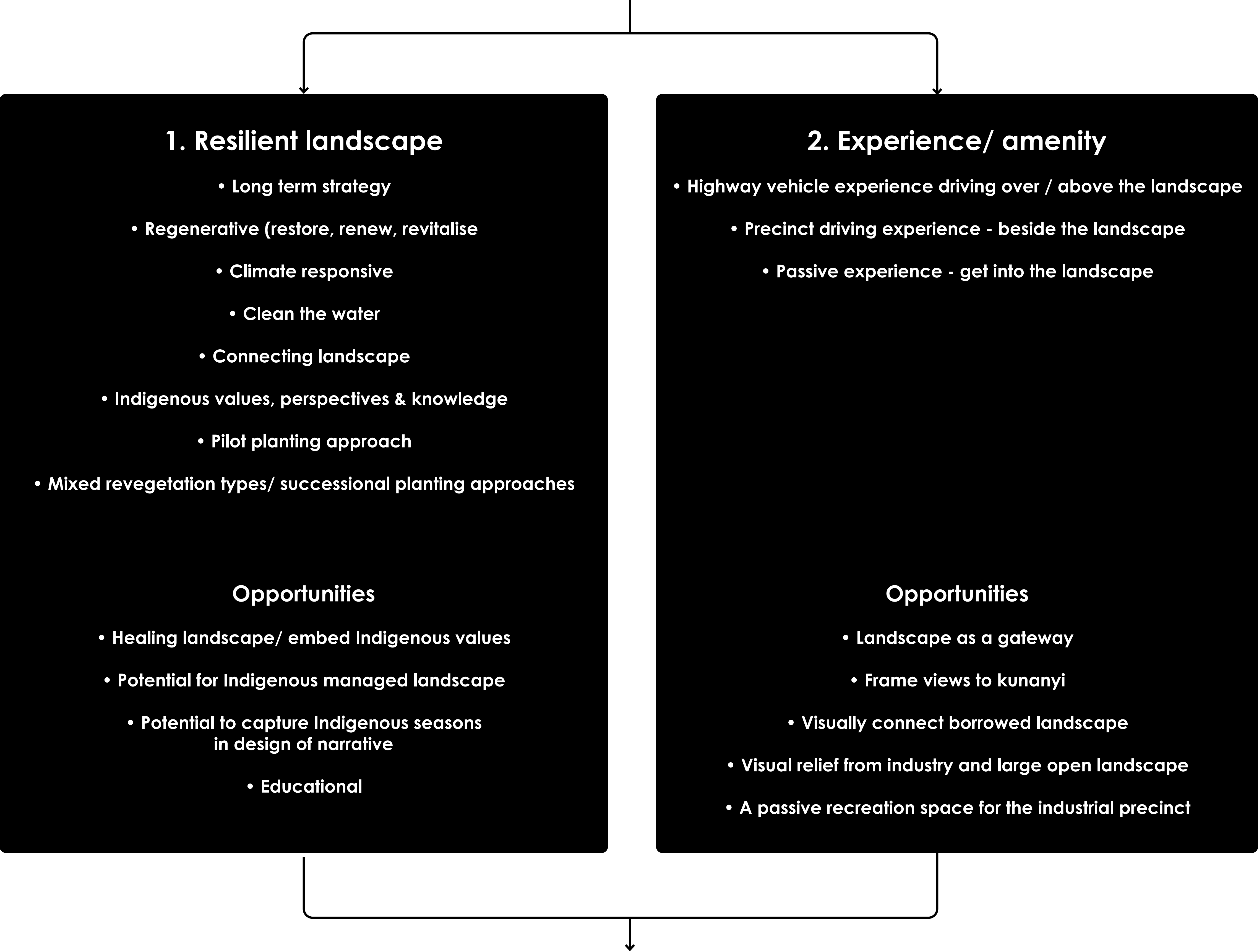
Verge



# TRANSPORT HUB LANDSCAPE GATEWAY - **INTERNAL EXPERIENCE / OPPORTUNITIES**



# TRANSPORT HUB - LANDSCAPE GATEWAY

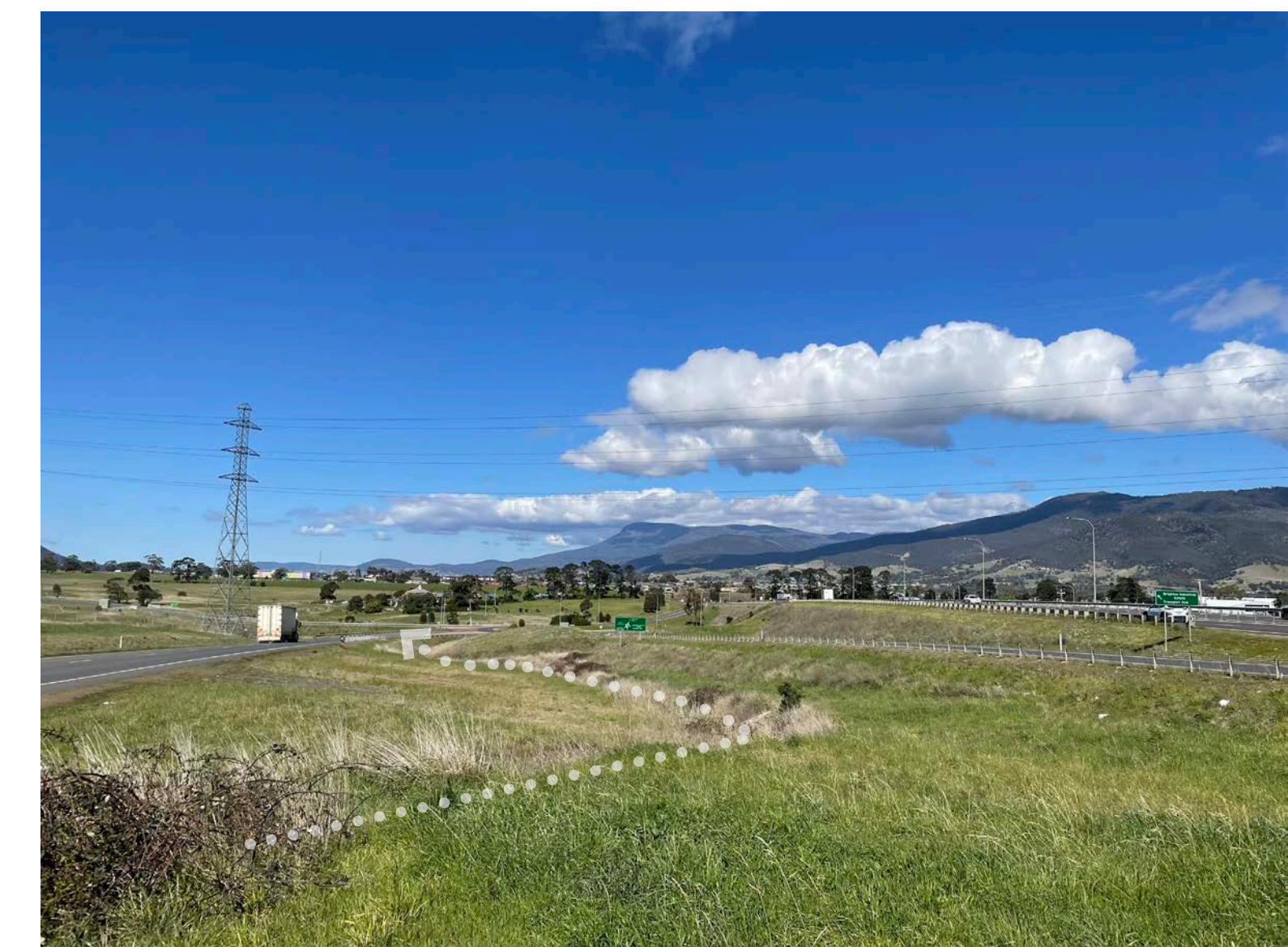
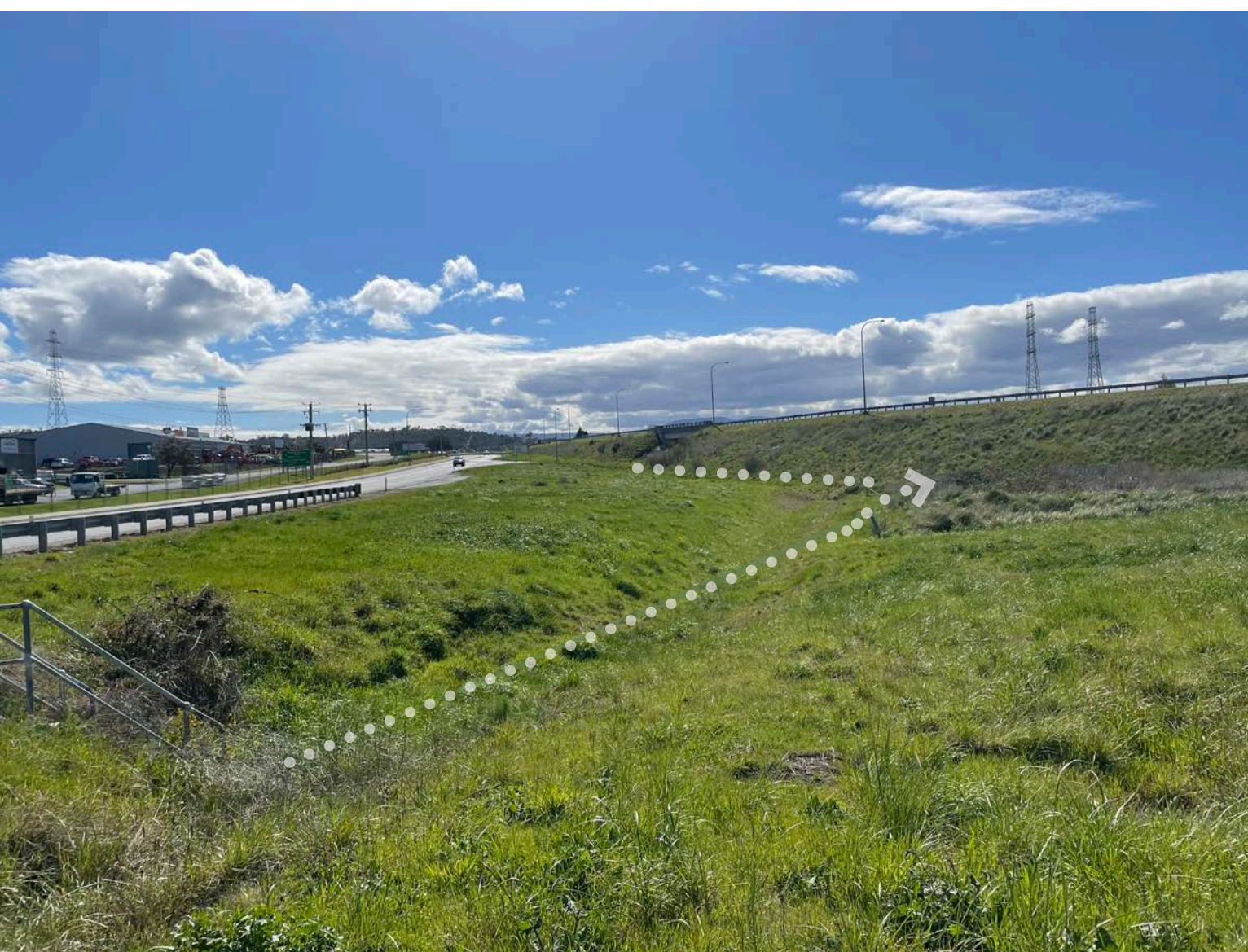
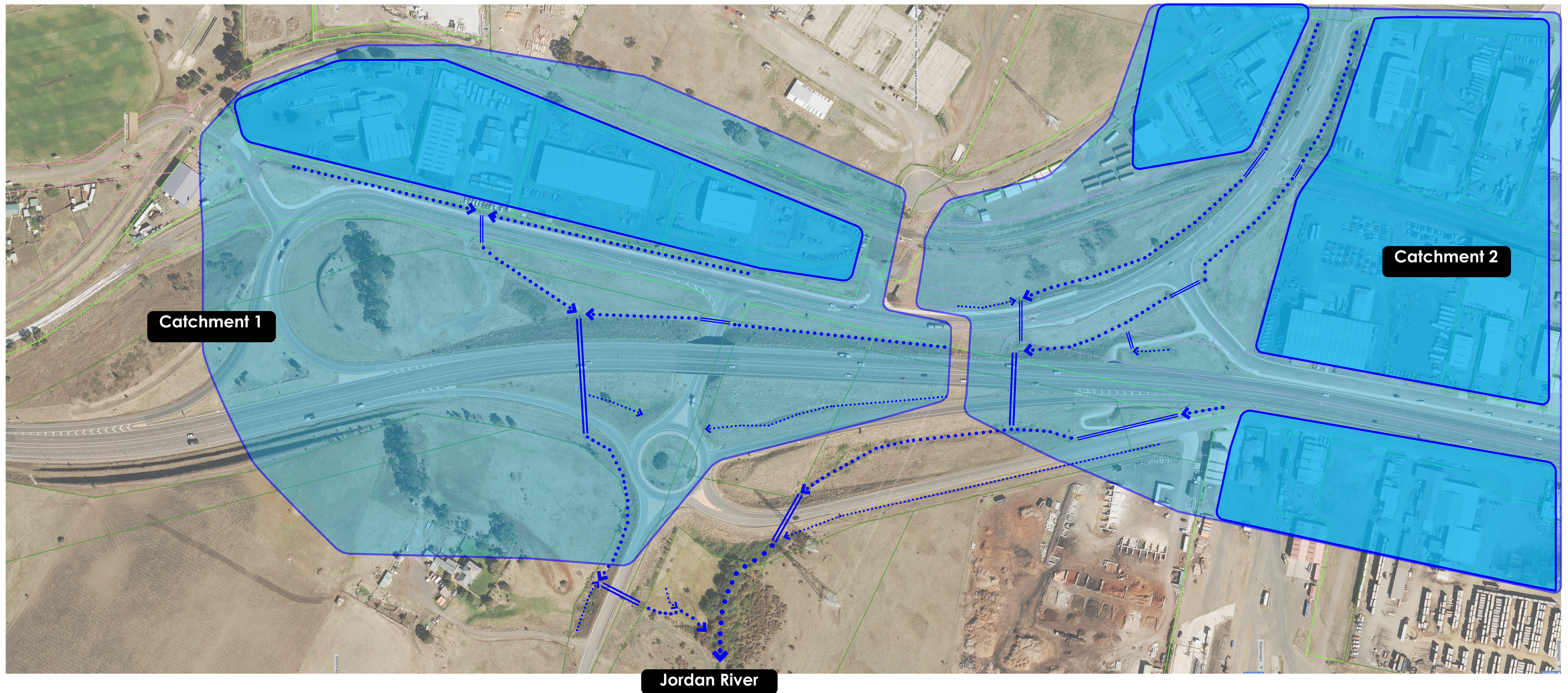


**LOW MAINTENANCE / REGENERATIVE / RESILIENT**



## TRANSPORT HUB LANDSCAPE GATEWAY - **LANDSCAPE FRAMEWORK**









## 1. Resilient landscape

- Regenerative (restore, renew, revitalise)
  - Climate responsive
  - Clean the water
- Connecting landscape
- Indigenous values, perspectives & knowledge

### Opportunities

- Healing landscape/ embed Indigenous values
- Educational

## 2. Experience/ amenity

- Highway vehicle experience driving over / above the landscape
  - Precinct driving experience - beside the landscape
  - Passive experience - get into the landscape

### Opportunities

- Frame views to kunanyi
- Visually connect borrowed landscape
- Visual relief from industry and large open landscape

## Notional species

- Blackwoods
- Melaleuca spp.
- Euc. Ovata









### 1. Resilient landscape

- Regenerative (restore, renew, revitalise)
- Climate responsive

#### Opportunities

- Potential to capture Indigenous seasons in design of narrative
- Educational

### 2. Experience/ amenity

- Highway vehicle experience driving over / above the landscape

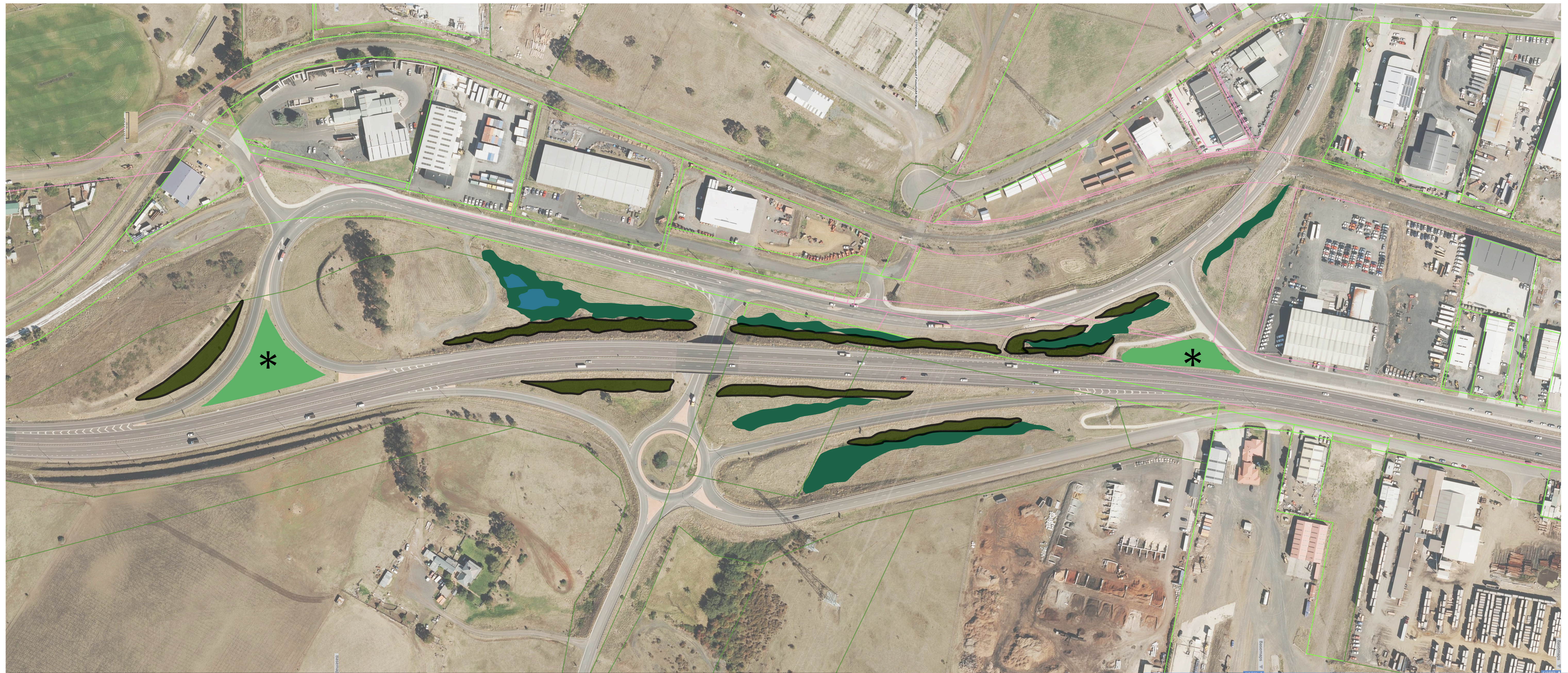
#### Opportunities

- Landscape as a gateway

### Notional species

- Themeda spp.
- Westringia
- Sagg
- Atriplex





### 1. Resilient landscape

- Regenerative (restore, renew, revitalise)
- Climate responsive
- Connecting landscape
- Indigenous values, perspectives & knowledge

#### Opportunities

- Healing landscape/ embed Indigenous values

### 2. Experience/ amenity

- Highway vehicle experience driving over / above the landscape
- Precinct driving experience - beside the landscape

#### Opportunities

- Landscape as a gateway
- Frame views to kunanyi
- Visually connect borrowed landscape
- Visual relief from industry and large open landscape

### Notional species

- Mass Sheoak

Elwick



1:1500 @ A1





### 1. Resilient landscape

- Regenerative (restore, renew, revitalise)
- Climate responsive
- Connecting landscape
- Indigenous values, perspectives & knowledge

#### Opportunities

- Healing landscape/ embed Indigenous values
- Potential for Indigenous managed landscape
- Potential to capture Indigenous seasons in design of narrative

### 2. Experience/ amenity

- Highway vehicle experience driving over / above the landscape
- Precinct driving experience - beside the landscape

#### Opportunities

- Landscape as a gateway
- Frame views to kunanyi
- Visually connect borrowed landscape
- Visual relief from industry and large open landscape

### Notional species

- Themeda spp.
- Native flowering meadow
- Banksia
- Euc. spp
- Sagg
- Poa





## 1. Resilient landscape

- Regenerative (restore, renew, revitalise)

## 2. Experience/ amenity

- Highway vehicle experience driving over / above the landscape
- Precinct driving experience - beside the landscape
- Passive experience - get into the landscape

### Opportunities

- Landscape as a gateway
- Visual relief from industry and large open landscape



