

Community Consultation

December 2019



BRIDGEWATER PARKLAND
FORESHORE PLAYGROUND

CONTENTS

The site.....	3
Consultation methods.....	4
Consultation poster.....	5
'Our Say' forum.....	7
Summary.....	8

Bridgewater Parkland Community Consultation Report
V1 - December 2019

Prepared for Brighton Council
By Playstreet Pty Ltd



THE SITE

The proposed Foreshore Playground is the second stage in the Bridgewater Parkland Master Plan, which provides a future direction for the reserve that will enhance the community by providing greater recreational opportunities, and work to improve and

strengthen the identity of the Bridgewater area.

The site is situated off Eddington Street in Bridgewater, and is adjacent to Vinnie's Growth Centre and the Derwent River.



CONSULTATION METHODS

CONSULTATION POSTER

A diagrammatic plan of the proposed playground and site was displayed on a poster with images of six signature play elements and a suite of complementary play pieces. The poster was given to local schools and community groups along with stickers and sticky notes so that students and children of the community could vote for their favourite option, and make any comment on the complementary play pieces and preferences for a skate park or pump track.

The following schools and community groups were given a chance to participate:

- Gagebrook Primary School
- Herdsmans Cove Primary School
- East Derwent Primary School
- St Pauls Primary School
- Jordan River Learning Federation
- Bridgewater PCYC
- Bridgewater Community Centre
- Gagebrook Community Centre
- Bridgewater Library

Posters were dropped off at these locations on Wednesday 20th November 2019 with the intention to collect on Monday 2nd December 2019. However this was extended to Wednesday 4th December to allow teachers and staff to give students more time to vote.

SOCIAL MEDIA

Links to the consultation poster and other supplementary information were posted to the Bridgewater Parkland Facebook Page and the Brighton Council Facebook Page.

'OUR SAY' FORUM

'Our say' is a Brighton Council initiative which provides an online forum for any member of the community to make comment or provide suggestions relating to local issues.

The consultation poster and other supplementary information went live on the 'Our Say' forum on Thursday 21st November 2019, and results from this were collated for review on Tuesday 3rd November 2019.

BRIGHTON ALIVE MEETING

Brighton Alive brings members of Brighton Council and community groups within the Brighton Municipality together every month to discuss relevant local topics and issues.

Playstreet attended the November meeting to discuss the ideas and plans for the Foreshore Playground, and the intent behind the consultation poster.

Representatives from the following groups and associations were present:

- Brighton Council
- Save the Children
- The Smith Family
- Australian Early Development Census
- Department of Justice
- Clarence Council
- Tas Water
- Uniting Church
- 26/TEN
- Communities for Children
- Salt Aglican
- Catholic Care Housing
- Centacare Evolved Housing

CONSULTATION POSTER



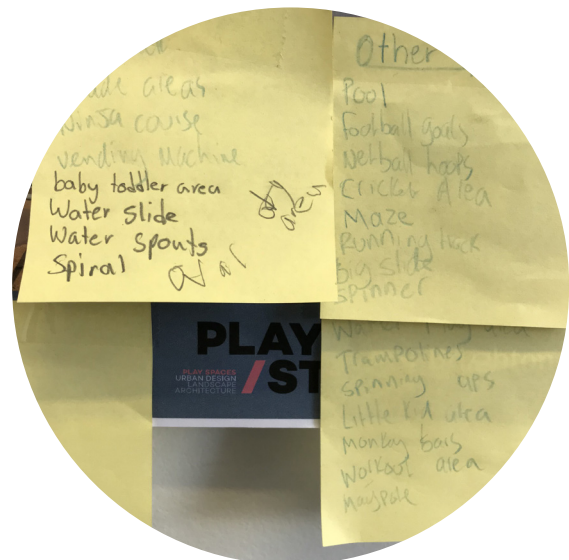
SIGNATURE PIECE OF PLAY EQUIPMENT

Total votes were as follows:

- Bloqx = 19 votes
- Four Mast Spacenet = 148 votes
- Berliner Tower 2 = 51 votes
- Tower Structure 1 = 129 votes
- **Climbing Forest = 159 votes**
- Tower Structure 2 = 34 votes

Students also voted for their preference between a pump track and a skate park, and the results were as follows:

- **Pump track = 141 votes**
- Skate park = 129 votes

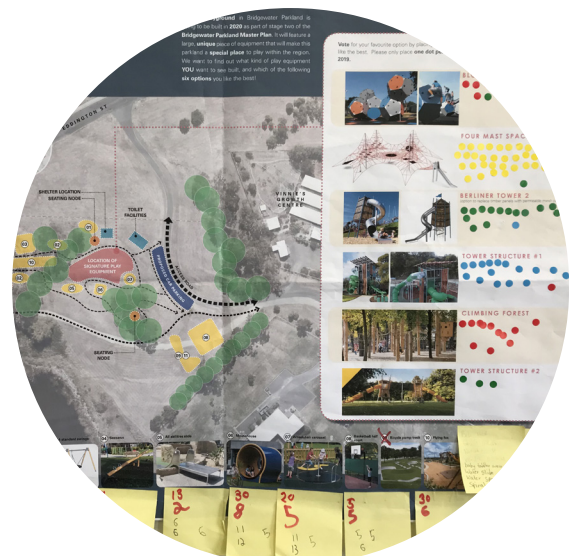


FEEDBACK

Additional feedback from sticky notes:

- More shade areas
- Football goals
- Netball hoops
- Maze
- Big slide
- Spinner
- Monkey bars
- Maypole
- Trampoline

Some students were concerned about visual safety and wanted to ensure that the playground was going to be easily monitored and have clear sightlines.

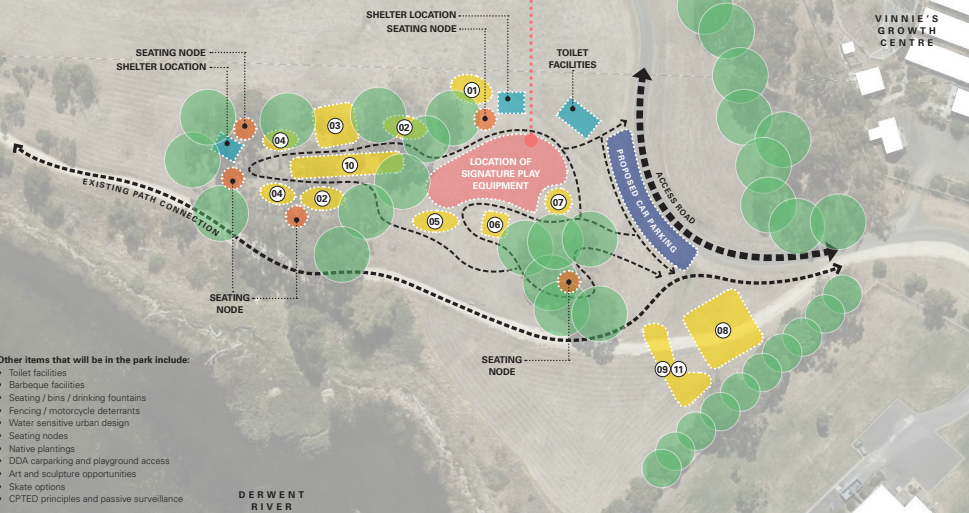


BRIDGEWATER PARKLAND

FORESHORE PLAYGROUND

A **new playground** in Bridgewater Parkland is going to be built in **2020** as part of stage two of the **Bridgewater Parkland Master Plan**. It will feature a large, **unique** piece of equipment that will make this parkland a **special place** to play within the region. We want to find out what kind of play equipment **YOU** want to see built, and which of the following **six options** you like the best!

Vote for your favourite option by placing a **sticky dot** in the space next to the play equipment you like the best. Please only place **one dot per person**. Voting will end on **Friday 29th of November 2019**.



Other items that will be in the park include:

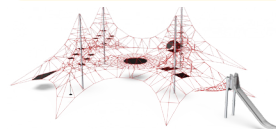
- Toilet facilities
- Barbecue facilities
- Seating / bins / drinking fountains
- Fencing / motorcycle deterrents
- Water sensitive urban design
- Seating nodes
- Native plantings
- DDA carparking and playground access
- Art and sculpture opportunities
- Skate options
- CPTED principles and passive surveillance



Comments on the other play items are **welcome** by using the **sticky notes** provided.



BLOXX



FOUR MAST SPACENET



BERLINER TOWER 2
(option to replace timber panels with permeable mesh panels)



TOWER STRUCTURE #1



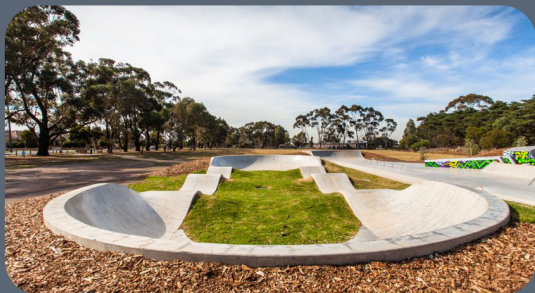
CLIMBING FOREST



TOWER STRUCTURE #2

Which type of **play** is your preference? Vote for **ONE** of these options with a **sticky dot** provided.

PUMP TRACK



OR

SKATE PARK



‘OUR SAY’ FORUM

SIGNATURE PIECE OF PLAY EQUIPMENT

Total votes were as follows:

- Bloqx = 0 votes
- Four Mast Spacenet = 2 votes
- Berliner Tower 2 = 0 votes
- Tower Structure 1 = 4 votes
- Climbing Forest = 2 votes
- **Tower Structure 2 = 6 votes**

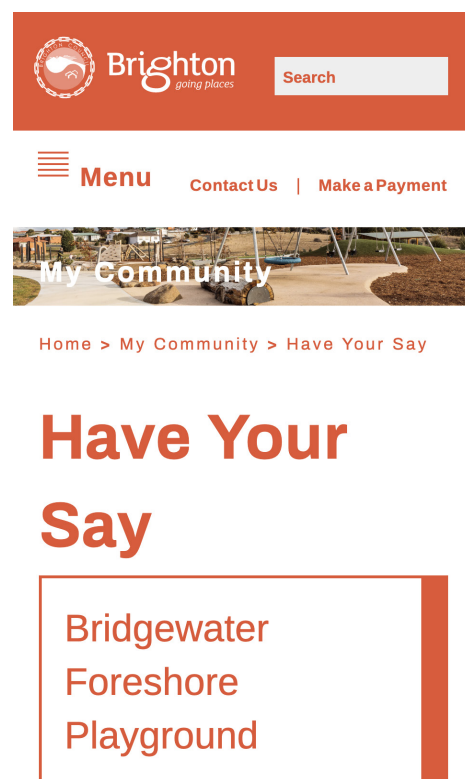
The community also voted for their preference between a pump track and a skate park, and the results were as follows:

- **Pump track = 11 votes**
- Skate park = 5 votes

FEEDBACK

The forum received several comments regarding the diagrammatic park design, safety and inclusion:

- ‘Supporting equipment great’
- ‘The playground pieces look great!’
- ‘Would love some more info re: the CPTED principles being applied’
- ‘Try to include equipment for all children such as equipment for deaf of blind children. They deserve a playground too’
- ‘Needs to have 2 flying foxes!’
- ‘I also think some little kid slides would make this park perfect’



SUMMARY

Across all of the forums the preferred piece of signature play equipment selected was the climbing forest with 161 votes, followed closely by the four mast spacenet with 150 votes.

The pump track (152 votes) was quite clearly preferred over a skate park (135 votes) with students and local community alike.

The results of the consultation will be used to guide the design of the playground, with the draft concept going back out to the community for further comment.

