

# BRIDGEWATER PARKLAND

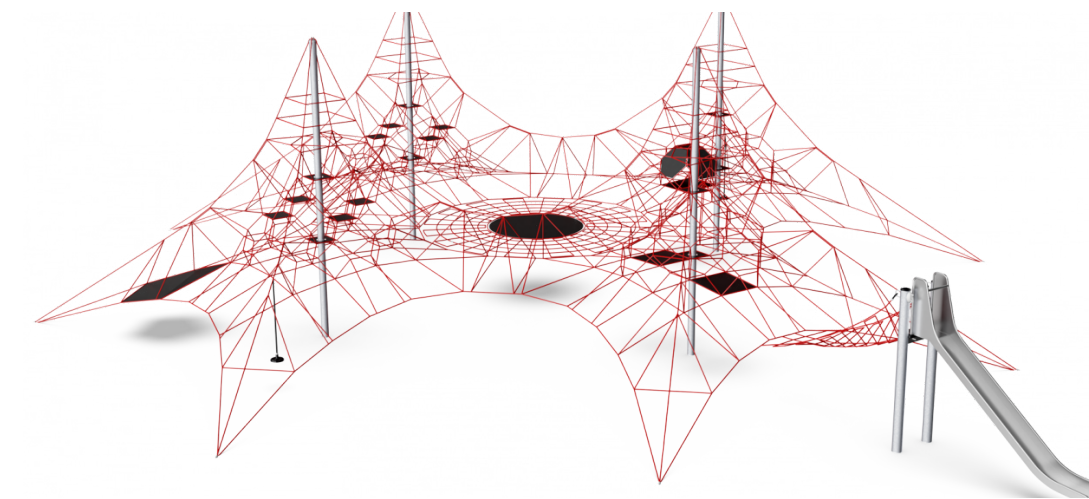
## FORESHORE PLAYGROUND

A **new playground** in Bridgewater Parkland is going to be built in **2020** as part of stage two of the **Bridgewater Parkland Master Plan**. It will feature a large, **unique** piece of equipment that will make this parkland a **special place** to play within the region. We want to find out what kind of play equipment **YOU** want to see built, and which of the following **six options** you like the best!

**Vote** for your favourite option by placing a **sticky dot** in the space next to the play equipment you like the best. Please only place **one dot per person**. Voting will end on **Friday 29th of November 2019**.



**BLOXX**



**FOUR MAST SPACENET**



**BERLINER TOWER 2**  
(option to replace timber panels with permeable mesh panels)



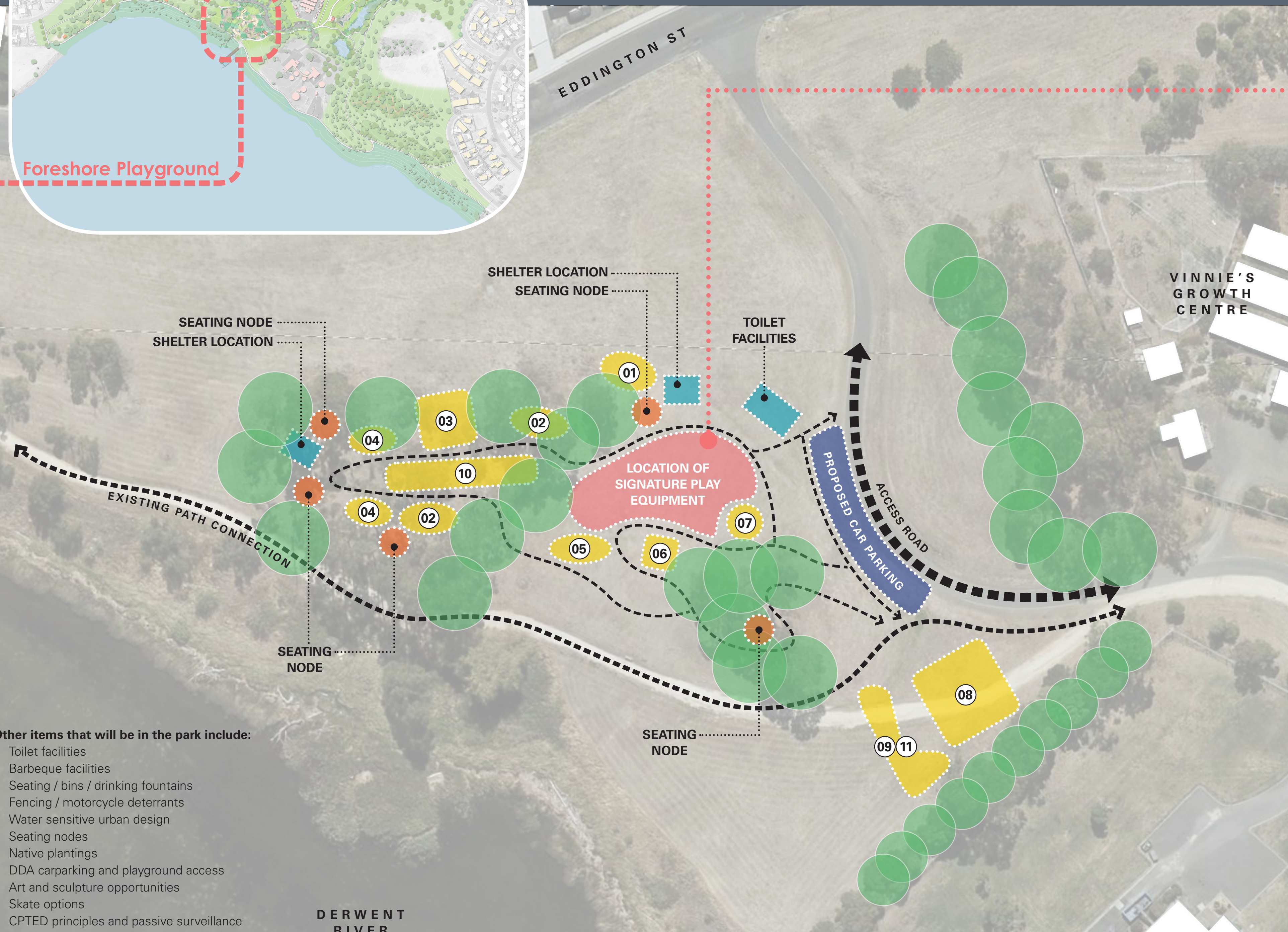
**TOWER STRUCTURE #1**



**CLIMBING FOREST**



**TOWER STRUCTURE #2**



### Other items that will be in the park include:

- Toilet facilities
- Barbeque facilities
- Seating / bins / drinking fountains
- Fencing / motorcycle deterrents
- Water sensitive urban design
- Seating nodes
- Native plantings
- DDA carparking and playground access
- Art and sculpture opportunities
- Skate options
- CPTED principles and passive surveillance

**01** 'Altima Challenge' Climbing Posts



**02** Hammocks



**03** Swing set with basket swing and 4 standard swings



**04** Seesaws



**05** All abilities slide



**06** Mousehouse



**07** Wheelchair carousel



**08** Basketball half court



**09** Bicycle pump track



**10** Flying fox



**11** Skatepark items



**Comments** on the other play items are **welcome** by using the **sticky notes** provided.